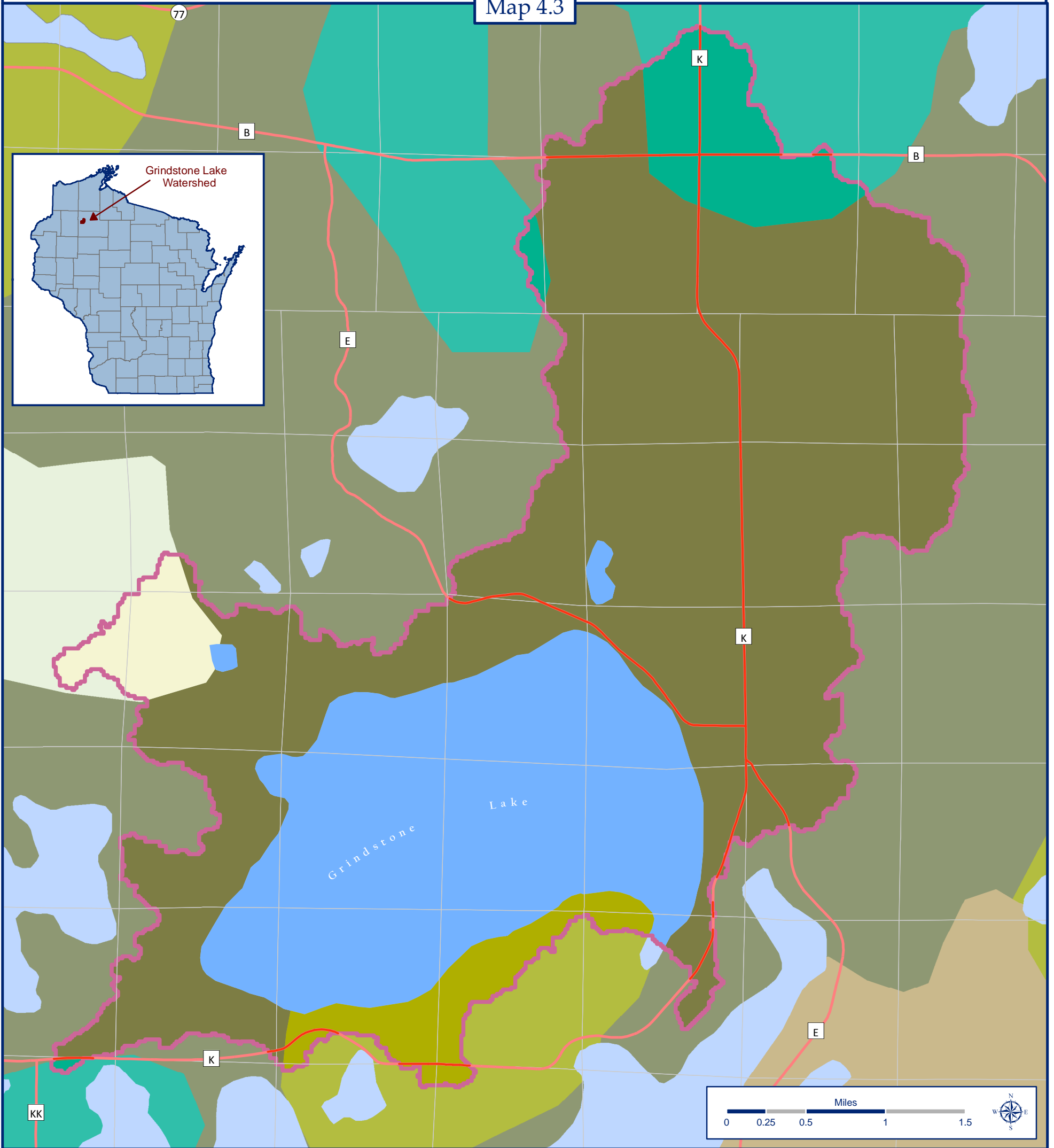











Pre~Settlement Vegetation

Grindstone Lake Watershed, Sawyer County, Wisconsin

Map 4.3



Pre~settlement Vegetation and Watershed Statistics

	White, Black, & Bur Oak	0 Acres		Watershed Boundary
	Aspen, White Birch, Pine	323 Acres		Section Boundaries
	Jack Pine, Scrub, Barrens, & Oak Forest	463 Acres		County Trunk Highway
	Sugar Maple, Yellow Birch, White & Red Pine	669 Acres		
	White & Red Pine	7,135 Acres		
	Surface Water	3,110 Acres		

Grindstone Lake Watershed equals 11,700 total acres

Data Sources

Pre-settlement vegetation from the Wisconsin Department of Natural Resources derived from a 1:500,000 scale map showing the pre-settlement vegetation cover in Wisconsin. Data digitized from a 1976 map created from land survey notes written in the mid 1800's when Wisconsin was first surveyed.

Map Created by Jon Galloy & Michael Broton - Version 12/22/2010

Funding by Wisconsin Department of Natural Resources Lake Planning Grant Program



Sponsored by the Grindstone Lake Association