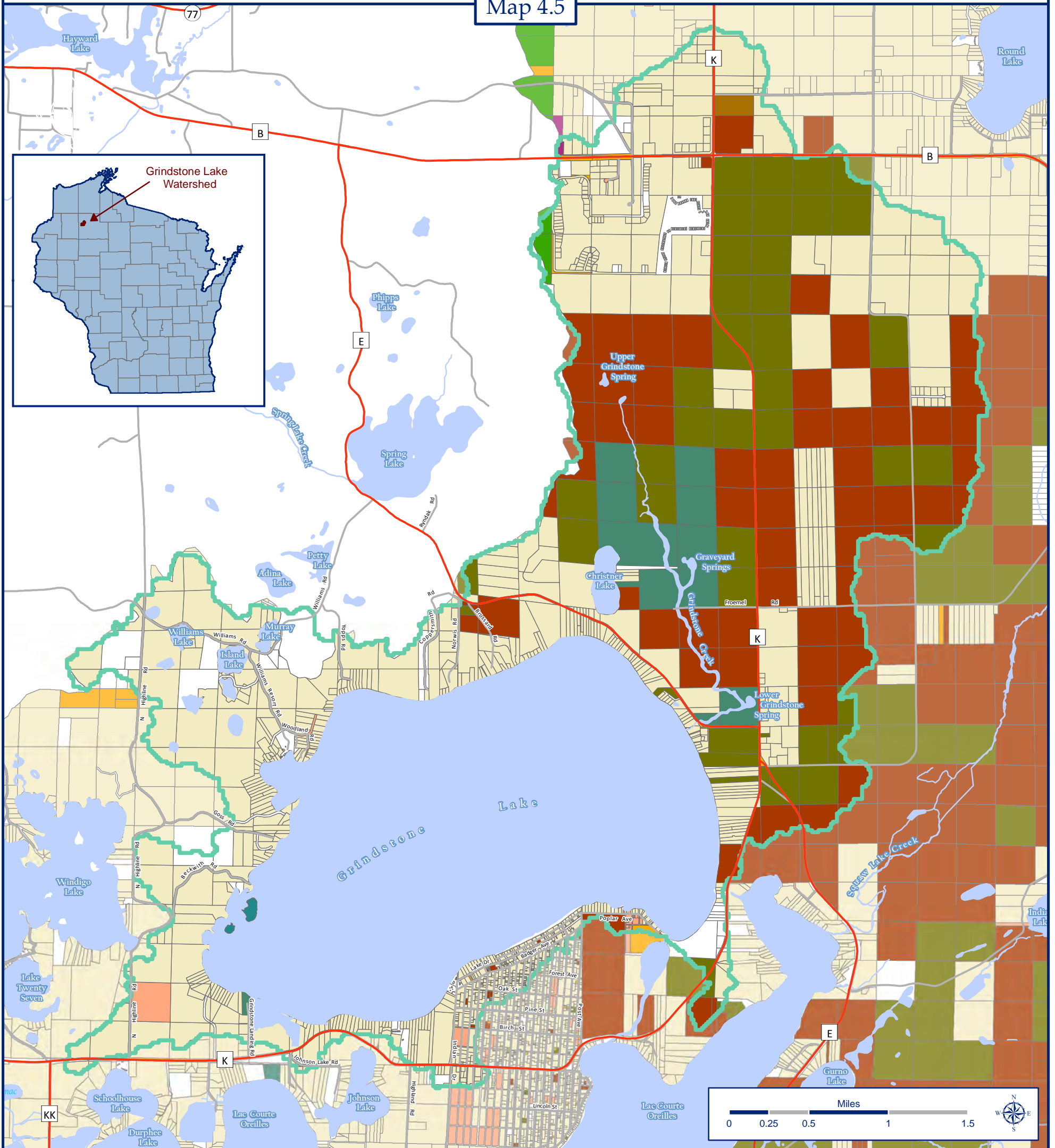


Publicly Managed Lands

Grindstone Lake Watershed, Sawyer County, Wisconsin

Map 4.5



Publicly Managed Lands and Watershed Statistics

- | | |
|---|----------------------------|
| Private 3,948 acres | State of Wisconsin 7 acres |
| Lac Courte Oreilles Band 1,947 acres | Utilities 2 acres |
| Federal Trust for Lac Courte Oreilles 1,392 acres | Data Unavailable 471 acres |
| WDNR Managed Lands 412 acres | Surface Water 3,318 acres |
| Township 65 acres | Watershed Boundary |
| Sawyer County 57 acres | Major Highways |
| Sawyer County Forest 20 acres | Roads |
| St. Croix Band 20 acres | |

Grindstone Lake Watershed equals 11,700 total acres

Data Sources

Parcel ownership derived from shapefiles obtained from the Sawyer County Land Information Office. These shapefiles contain incomplete records accounting for the "Data Unavailable" acreage denoted on the map for the years 2005 and 2008. Conversations with officials from the Bureau of Indian Affairs and the Lac Courte Oreilles Realty Office helped delineate and confirm lands held by the LCO and those lands held in trust for the LCO.

Map Created by Jon Galloy & Michael Broton -- Version 2/22/2011

Funding by Wisconsin Department of Natural Resources Lake Planning Grant Program



Sponsored by the Grindstone Lake Association