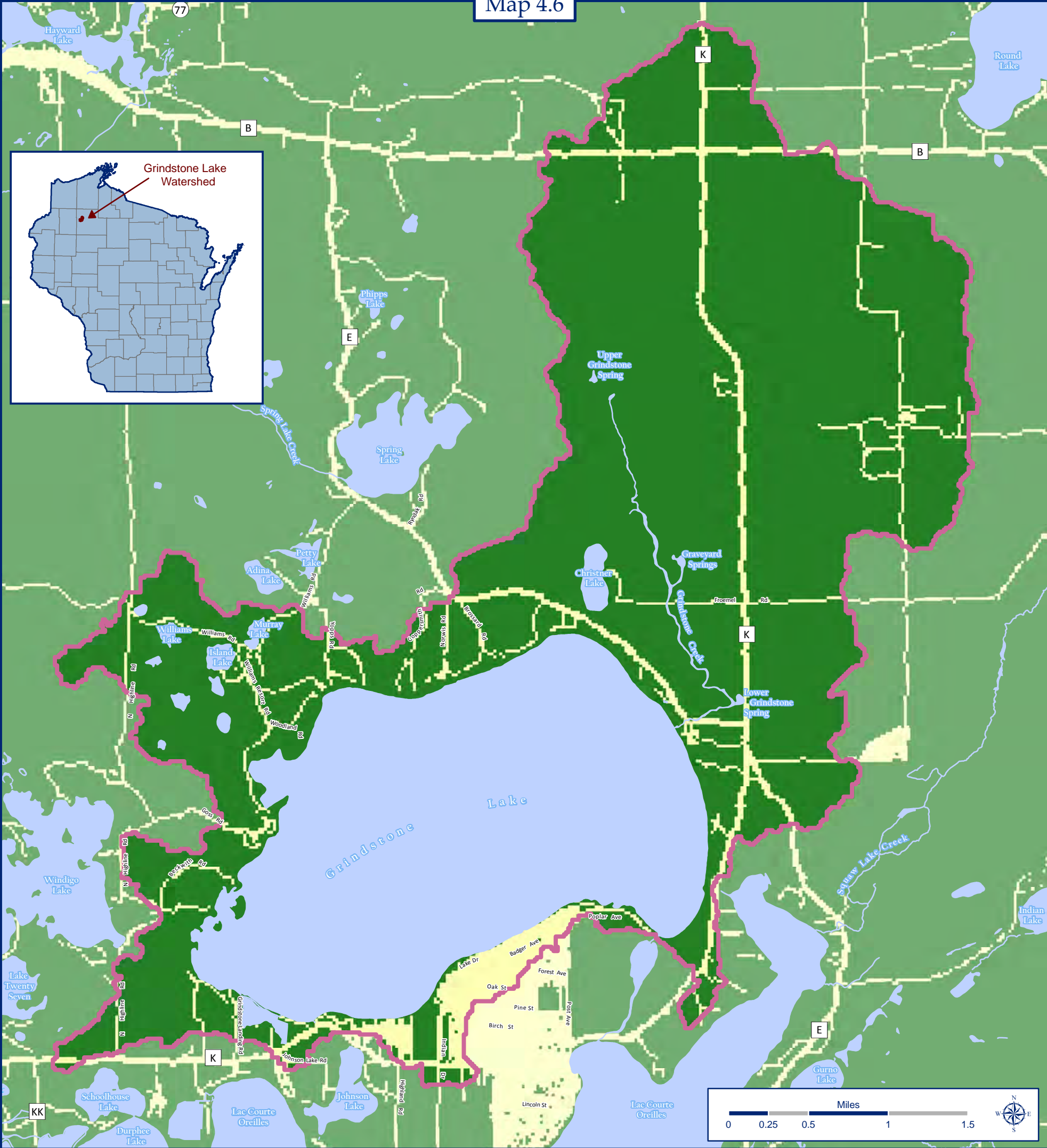


# Impervious Surfaces

## Grindstone Lake Watershed, Sawyer County, Wisconsin

Map 4.6



### Impervious Surfaces and Watershed Statistics

- Pervious Surface (entire pixel is pervious to water) — 93 percent of the watershed
- Impervious Surface (part of the pixel is impervious to water) — 7 percent of the watershed
- Surface Water
- Watershed Boundaries

\* The size of a pixel is 30 meters square or approximately .2224 acres. Data from satellite imagery likely underestimates impervious surfaces. Features, such as driveways and houses that are covered with a dense tree canopy might not be visible for satellite interpretation.

Grindstone Lake Watershed equals 11,700 total acres

### Data Sources

Imperviousness data from the National Land Cover Database, 2001. This data layer is an ESRI Grid delineating percent surface imperviousness (0-100%) using 30 meter square cells. Database project conducted by the Multi-Resolution Land Characteristics Consortium - a partnership among federal agencies including:

- U.S. Geological Survey
- National Oceanic and Atmospheric Administration
- U.S. Environmental Protection Agency
- U.S. Department of Agriculture
- U.S. Forest Service
- National Park Service
- U.S. Fish and Wildlife Service
- Bureau of Land Management
- USDA Natural Resources Conservation Service

Map Created by Jon Galloy & Michael Broton – Version 1/18/2011

Funding by Wisconsin Department of Natural Resources Lake Planning Grant Program



Sponsored by the Grindstone Lake Association