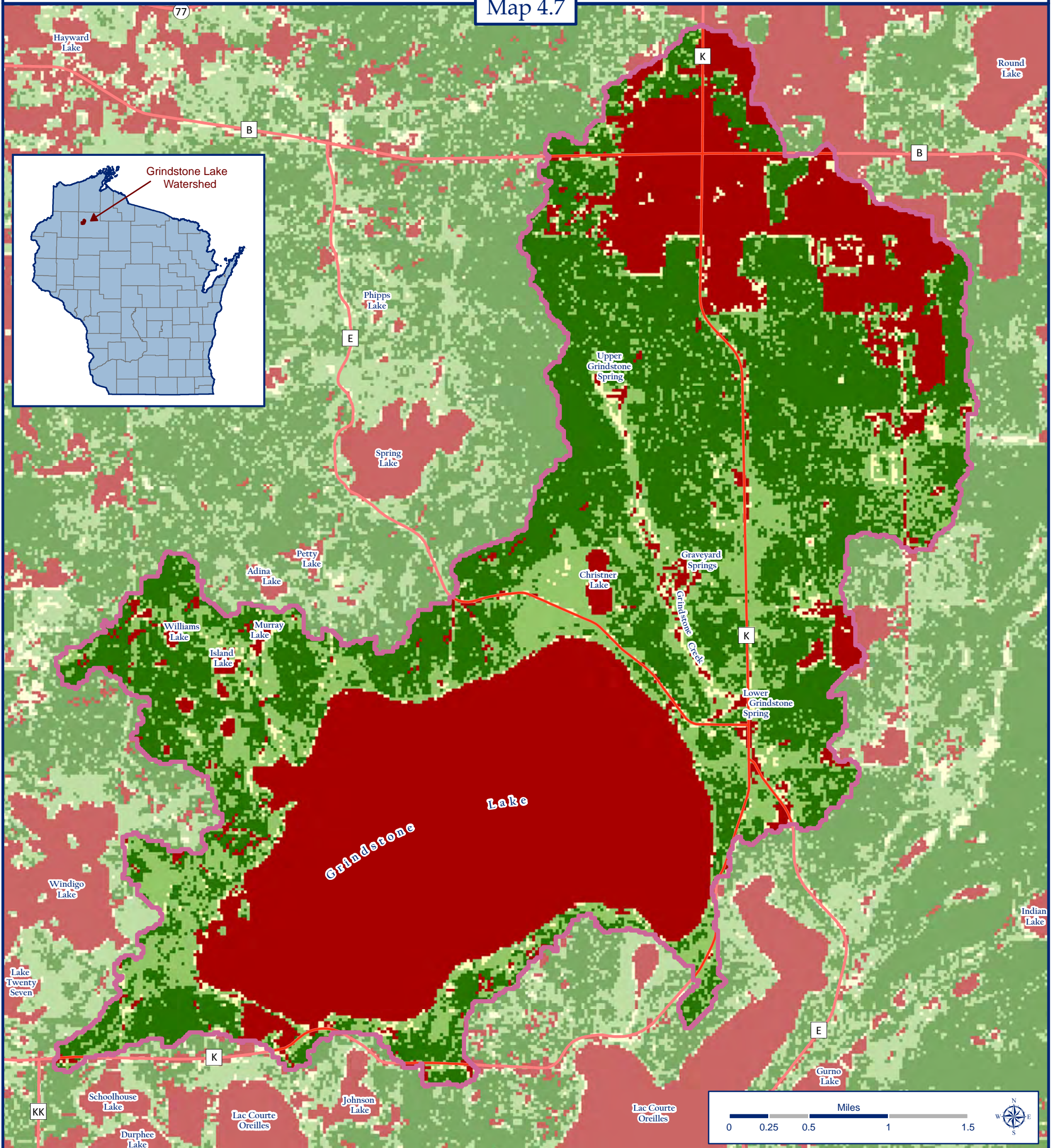


Tree Canopy Density

Grindstone Lake Watershed, Sawyer County, Wisconsin

Map 4.7



Tree Canopy Density and Watershed Statistics

	0 Percent Forested	4,782 Acres
	1 - 23	3 Acres
	24 - 65	350 Acres
	66 - 87	2,396 Acres
	88 - 100	4,169 Acres
	Watershed Boundaries	
	County Trunk Highway	

Grindstone Lake Watershed equals 11,700 total acres

Data Sources

Tree canopy density from the National Land Cover Database, 2001. This data layer is an ESRI GRID delineating percent tree canopy (0-100%) using 30-meter cells. Database project conducted by the Multi-Resolution Land Characteristics Consortium - a partnership among federal agencies including:

- U.S. Geological Survey
- National Oceanic and Atmospheric Administration
- U.S. Environmental Protection Agency
- U.S. Department of Agriculture
- U.S. Forest Service
- National Park Service
- U.S. Fish and Wildlife Service
- Bureau of Land Management
- USDA Natural Resources Conservation Service

Map Created by Jon Galloy & Michael Broton -- Version 12/22/2010

Funding by Wisconsin Department of Natural Resources Lake Planning Grant Program



Sponsored by the Grindstone Lake Association