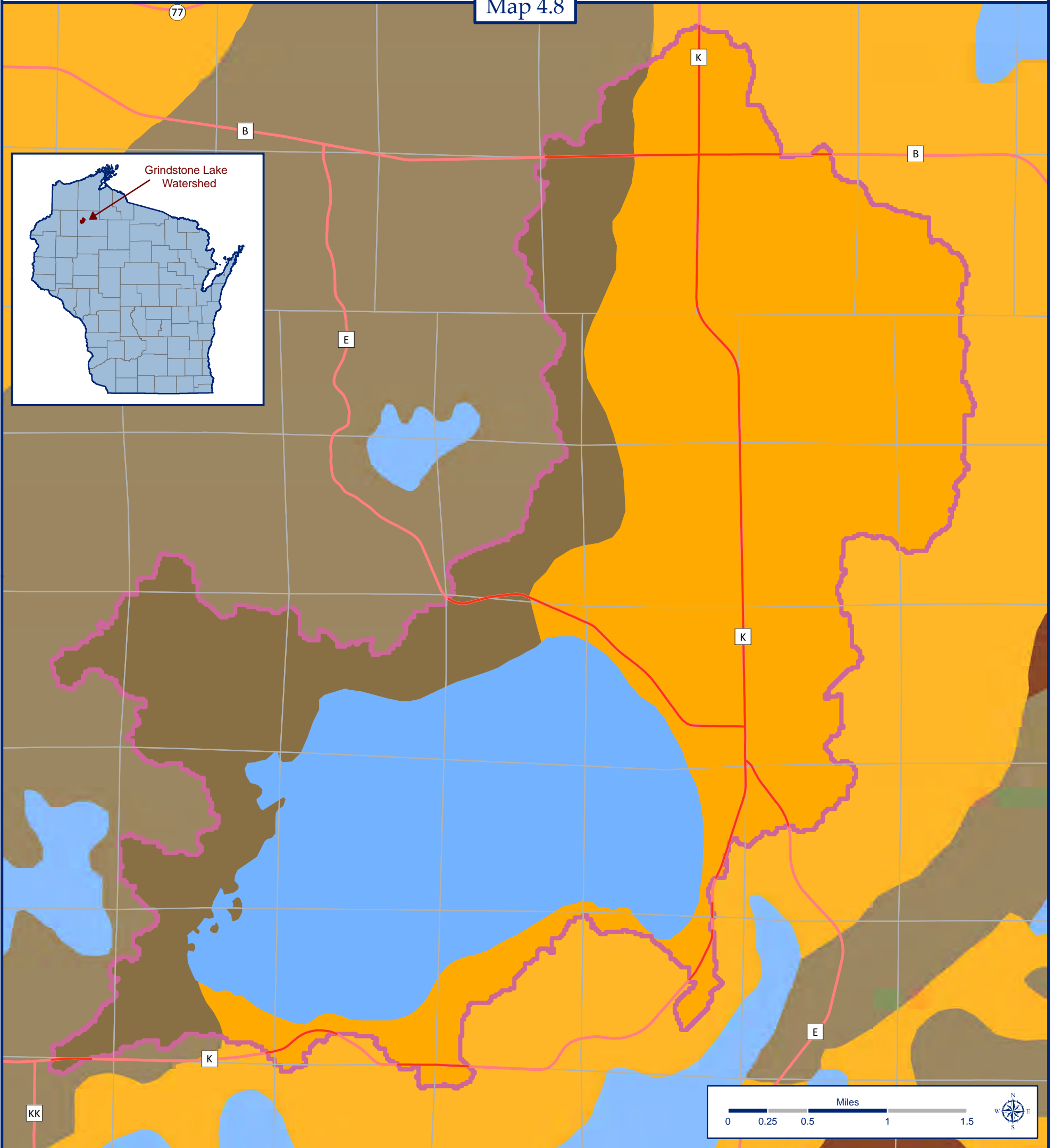






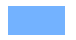



# Glacial Geology

## Grindstone Lake Watershed, Sawyer County, Wisconsin

Map 4.8



### Glacial Deposits and Watershed Statistics

	Outwash	0 Acres
	Pitted Outwash	5,775 Acres
	Ground Moraine	0 Acres
	End Moraine	2,748 Acres
	Surface Water	3,177 Acres
	Watershed Boundary	
	Public Land Survey System Section Boundaries	
	Major Highways	

Grindstone Lake Watershed equals 11,700 total acres

### Data Sources

Glacial deposits from Glacial Deposits of Wisconsin: Sand and Gravel Resource Potential map developed by the Land Resources Analysis Program, Wisconsin Geological and Natural History Survey, University of Wisconsin-Extension, and State Planning Office-Department of Administration, 1976.

Map was scanned and georeferenced by Jon Galloy, UW-Stevens Point GIS Center. Digital scan was digitized by Michael Broton, UW-Stevens Point GIS Center.

Map Created by Jon Galloy & Michael Broton -- Version 2/8/2011

Funding by Wisconsin Department of Natural Resources Lake Planning Grant Program



Sponsored by the Grindstone Lake Association