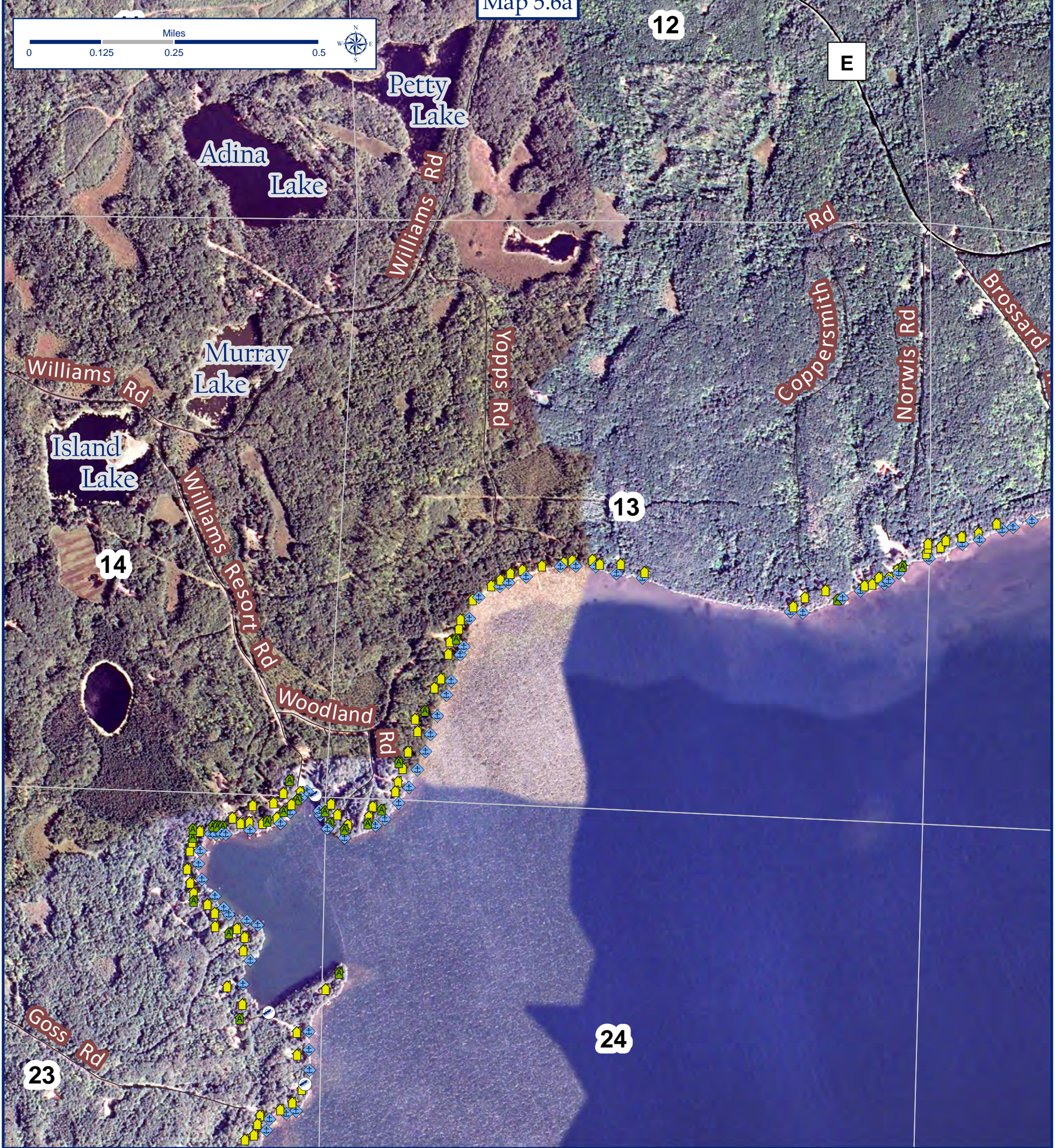


# Visible Structures

## Grindstone Lake, Sawyer County, Wisconsin

Map 5.6a



### Structures Visible from Littoral Zone and Statistics

	Miscellaneous	0 Total Observations		Municipal Road
	Boat Launch/Landing	3 Total Observations		County Trunk Highway
	Accessory Building	23 Total Observations		Section Boundaries
	Deck, Dock or Pier	66 Total Observations		
	Residence	79 Total Observations		

Total shoreline for Grindstone Lake equals 12.46 miles

### Data Sources

Visible structure field inventories conducted by citizen volunteers from the Grindstone Lake area in conjunction with the UW-Stevens Point GIS Center, Summer 2010. The inventory was conducted by boat in the littoral zone of Grindstone Lake during full leaf-on tree canopy conditions. Only structures visible to the naked eye were documented. Locations of structures were affixed to large-format hard copy maps and assigned a personal identification number. Attributes indicating type of structure, were recorded in a log book. Hard-copy maps were scanned, georeferenced to the Sawyer County Coordinate System, and digitized to the Grindstone Lake geodatabase by Jon Galloy and Michael Broton, UW-Stevens Point GIS Center.

Map Created by Jon Galloy & Michael Broton -- Version 1/7/2011

Funding by Wisconsin Department of Natural Resources Lake Planning Grant Program



Sponsored by the Grindstone Lake Association