



GRINDSTONE
LAKE 
FOUNDATION



Conserving the Grindstone Lake Cranberry Bog:

Supporting our Gem of a Lake, Our Future , and All
Who Depend on a Healthy Lake

Dag Sohlberg, GLA Board Member
Cindy Parker, GLF President





The Cranberry Bog

- 57 acres
- 1,790 ft shoreline
- Bounded by
 - Co Rd K
 - Public Boat landing road
 - Private Property to east
- Natural ice ridge along shoreline



The Cranberry Bog

- 1938 aerial photo

“Originally a non-forested wetlands”

Kelly Nechuta,
Sawyer Co. Zoning
and Conservation

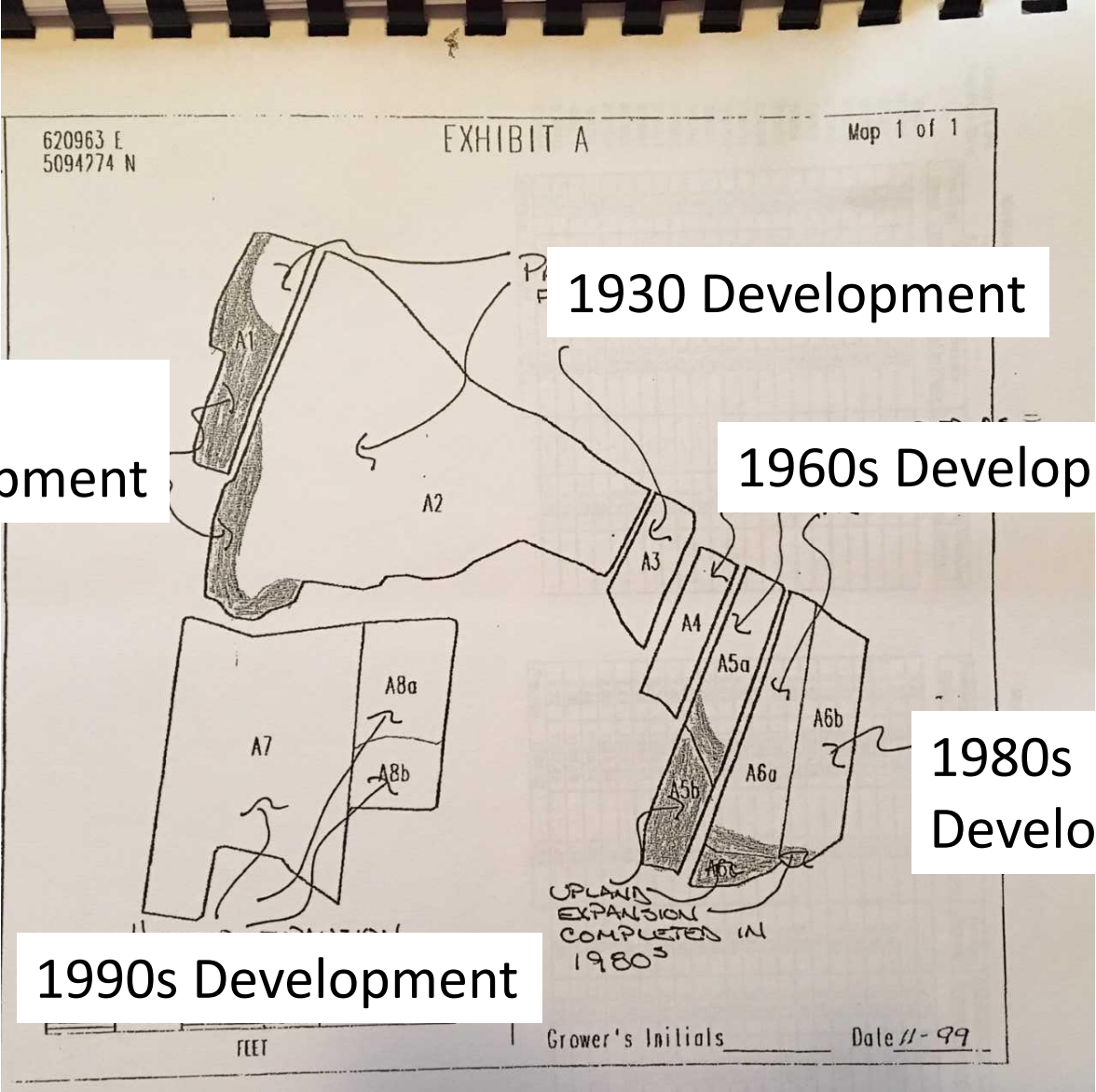


Cranberry Development

- 1938 first conversion of wetlands to cranberry bogs
- Expanded in 1960s and 1980s
 - 27 acres from the lakeshore to the rear property
 - 29 acres along Highway K
- Two inlets or irrigation ports cut into the ice ridge
- Irrigation ditches



Cranberry Bog Development: 1938-1990s



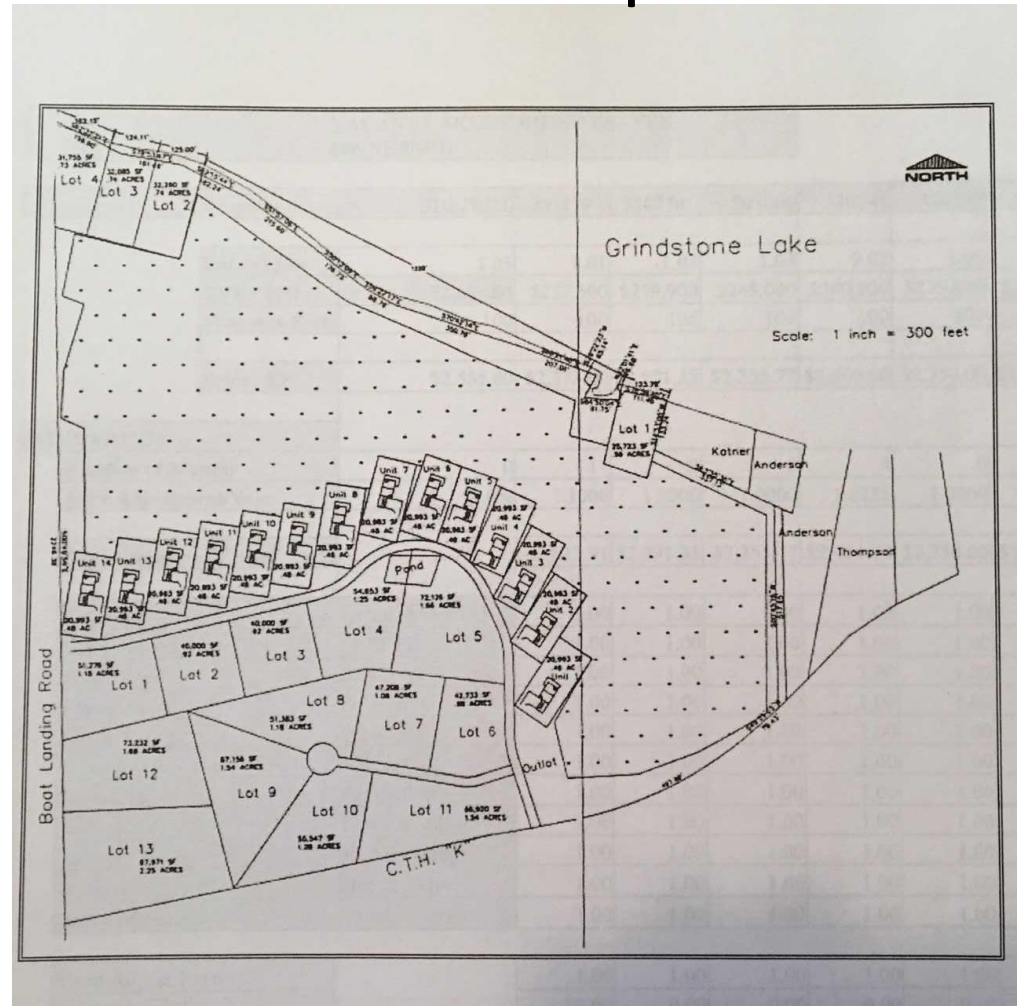


PROPOSED RESIDENTIAL DEVELOPMENTS

- Initial development
 - 64 units with wetlands dredged for a marina
 - DNR did not approve
- Grindstone Lake Association became actively involved in the bog in 2007
 - Coordinated public hearings
 - Identified strategies to support the development and wetlands protection
 - Development proposal adjusted to 31 units with wetlands protection

31 unit development

PROPOSED RESIDENTIAL DEVELOPMENTS





PROPOSED RESIDENTIAL DEVELOPMENTS

The Board's broad goals were to preserve Grindstone's water quality, protect the wetlands and maintain the ascetic beauty of the area. The [GLA] Board [was] not against development of the cranberry marsh...The Board wanted to get a cranberry farm out of production but not at the expense of a development which would be worse for the lake and surrounding environment...

(GLA 2007)



- Additional development and protection proposals followed
- Continued as an active cranberry farm until early 2000s

Foundation and Bog Acquisition



- July 31, 2018 the Grindstone Lake Foundation, Inc. forms
 - Has acquired its 501(c)(3) status
 - It is a charitable organization affiliated with the Grindstone Lake Association
 - **Goal:** Raise funds to purchase bog

Foundation and Bog Acquisition



- September 17, 2018 Cranberry Bog goes up for sale through an online auction
- Anonymous Grindstone Lake property owner won the bid
- Purchase agreement assigned to the Foundation and provided a loan to the Foundation for the acquisition
- Grindstone Lake Foundation, Inc. is the title holder to the property

WHY

Grindstone Lake has provided so much to four generations of my family that I wanted the chance to work with the lake community, the GLA, and the Foundation to give back to this amazing resource.

Anonymous Grindstone Lake
Property Owner, 2019

2018 Grindstone Lake Association
Meeting attendees voiced interest in
acquiring the bog



Financial Statements

Income Statement For the Period Ended 6/30/2019

	Year-to-Date Actual	Annual Budget	Remaining Budget
Income:			
Donations	\$ 10,000		\$ (10,000)
Grants	\$ -		\$ -
Other Income	\$ -		\$ -
Total Income	\$ 10,000	\$ -	\$ (10,000)
Expense:			
Fundraising Consultant	\$ 7,190		\$ (7,190)
Mailings	\$ -		\$ -
Other Fundraising Expense	\$ -		\$ -
General and Administration	\$ -		\$ -
Website	\$ -		\$ -
Insurance	\$ 298		\$ (298)
Real Estate Taxes	\$ -		\$ -
Interest Expense	\$ 11,253		\$ (11,253)
Other	\$ -		\$ -
Total Expense	\$ 18,741	\$ -	\$ (18,741)
Net Income/(Loss)	\$ (8,741)	\$ -	\$ 8,741



Financial Statements

Balance Sheet June 30, 2019

Assets:

Checking Account	\$	4,060
Pledges Receivable	\$	20,000
Land	\$	750,380
Land Improvements	\$	<u>-</u>
Total Assets	\$	<u>774,440</u>

Liabilities and Fund Balance:

Accounts Payable	\$	-
Real Estate Taxes Payable	\$	0
Notes Payable	\$	750,200
Accrued Interest Payable	\$	15,004
Equity Transfer From Grindstone Lake Association	\$	3,000
Unrestricted Fund Balance	\$	<u>6,236</u>
Total Liabilities and Fund Balance	\$	<u>774,440</u>



VISION: CLEAR

- **Conservation:** Protect land to support water quality and clarity; restore wetlands and native species
- **Legacy:** Pass enjoyment of clear water lake to children, grandchildren, and future generations
- **Education:** Provide educational opportunities to learn about the history of the land, cranberry farming, and native plants
- **Adds value:** Maintaining water clarity has a positive impact on property values (Wold and Kemp, 2019; USA Today)
- **Recreation** (trails for walking, hiking, running, skiing, snow shoeing, picnicking)

A PROPOSAL FOR THE LAND





A STRATEGY

RAISE

Raise funds from Grindstone Lake homeowners, area businesses, and friends of the lake

APPLY

Apply for land acquisition funds from the WI DNR, US Fish and Wildlife Service, and Foundations

COLLABORATE

Collaborate with Town of Bass Lake, Sawyer County, and Landmark Conservancy to permanently protect the land and create recreational opportunities



PROGRESS

ESTABLISHED GRINDSTONE LAKE FOUNDATION (in affiliation with the Grindstone Lake Association)

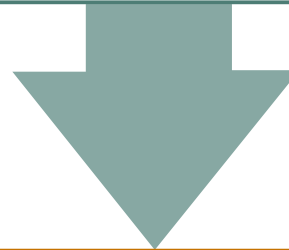
**Established
the Board**

**501c3
status**

**Garnered over
\$30,000 in
seed funding**

**Developed
a vision for
the land**

**Hired firm to
assist in grants
preparation and
fundraising**



**COLLABORATED WITH DONORS FOR PLAN TO
GAIN CLEAR TITLE TO THE LAND**



NEXT STEPS

WE NEED YOU

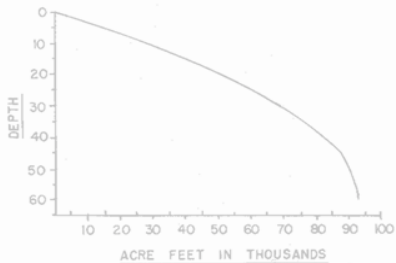
- Donate funds
- Serve on the Grindstone Lake Foundation Board to help with fundraising
- Participate in fund raising events
- Contribute to the vision and plans for the land

A GEM OF AN OPPORTUNITY



BOARD OF DIRECTORS

Cynthia (Cindy) Parker - President
Bruce Miller - Vice President
Michael (Mike) Warden - Treasurer
I. Reed Parker - Secretary
Donna Carlson
Cheryl Contant
Karen Mumford
Mark Schmiel
Nominations from the Floor



THANK YOU!!
GRINDSTONE ↑
LAKE ~~~~~
FOUNDATION



W.C.D. Islands
 Observation Is. 4.6 Acres
 Birch Is. 1.2 Acres

NORTH WOODS BEACH

W.C.D. B.M. "X" SPIKE IN NORWAY PINE 15' FROM SHORE ON OBSERVATION ISLAND
 ASSUMED ELEV. 100.00
 WATER ELEV. 94.00

SPECIES OF FISH

	Abundant	Common	Rare
Muskie		X	X
N. Pike		X	X
Walleye		X	X
L.M. Bass	X	X	
S.M. Bass	X	X	
Panfish	X		
Trout			X

EQUIPMENT RECORDING SONAR MAPPED JUNE 1964

TOPOGRAPHIC SYMBOLS

Brush Steep slope

WATER ELEV. 94

AREA 3116.6 WITH IS.
 3110.9 ACRES