



LANDMARK CONSERVANCY



What is a Land Trust?



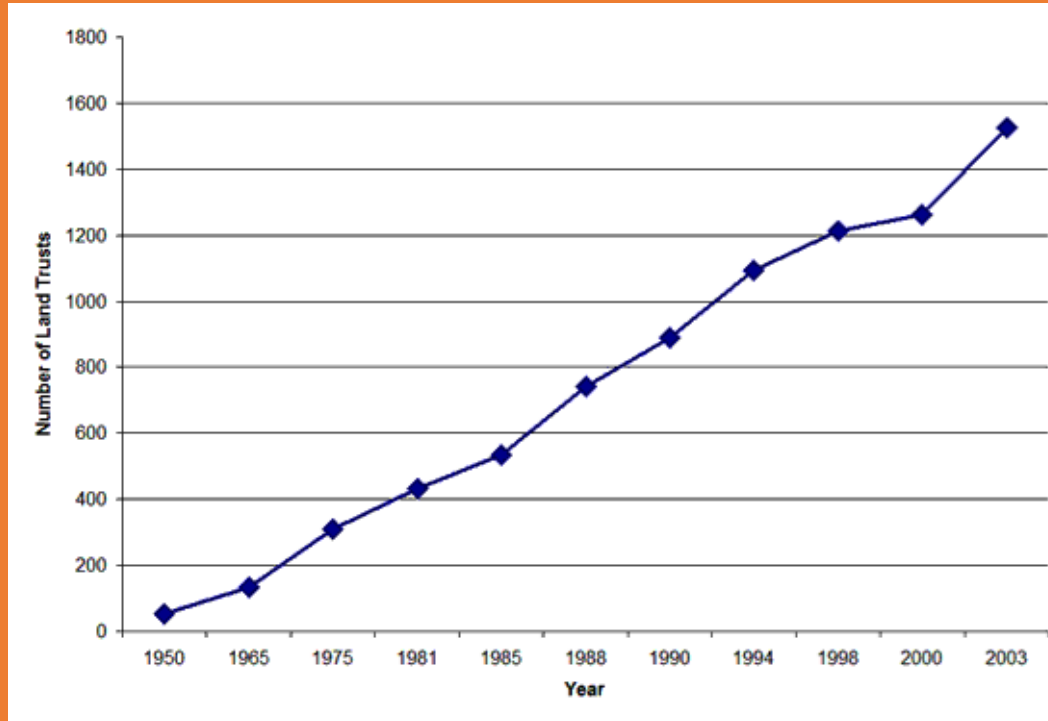
A land trust or conservancy is a non-profit organization working with willing landowners to conserve land and natural resources.



Why should I care?



A Brief History of Land Trusts



- Birth
 - East Coast
 - 100 years ago
- Growth
 - Nationwide Movement
 - Steady increase in past 50 years

- Today
 - Over 1,700 Land Trusts in U.S and 42 in Wisconsin

Who do Land Trusts work with?



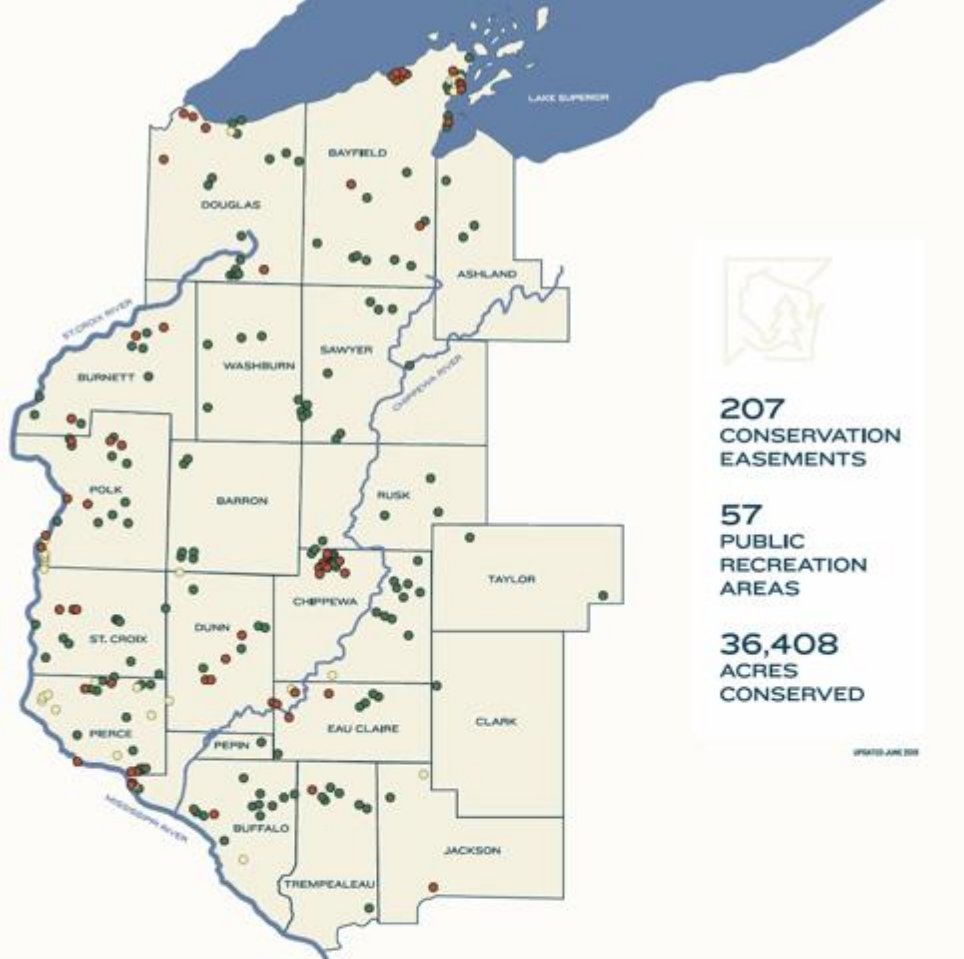
- Private Landowners
- Municipalities
- Govt. agencies
- Businesses
- Non-profits
- Lake Associations
- Citizen groups

What Do We Do?

Work with landowners, conservation partners, and communities to conserve our natural heritage



- Preserve land & special places – conservation easements, acquisitions, donations
- Steward protected lands
- Outreach & education
- Restoration
- Establish and steward trails
- Community engagement



207
CONSERVATION
EASEMENTS

57
PUBLIC
RECREATION
AREAS

36,408
ACRES
CONSERVED

PHOTO: JAKE BIRN

Where we work...



NATURAL HABITAT

Projects covering prairie, forest, wetland, rivers and lakes protect diverse ecological communities serving the habitat needs of wildlife, fish, birds, and plants.



OUTDOOR RECREATION

Privately and publicly owned projects provide opportunities for public nature-based outdoor activities including hiking, fishing, hunting, cross-country skiing, snowshoeing, and nature study.



FARMLAND

Diverse open space projects protect high quality soil resources, Community-Supported Agriculture farms, orchards, vineyards, and scenic viewsheds.



LANDMARK
CONSERVANCY

Conserving Wisconsin's natural legacy for everyone... forever.



How best to advance our Conservation Vision

- ▶ Targeted
- ▶ The right tools in the right places
- ▶ Community Partnerships
- ▶ Climate Resiliency
- ▶ Conservation Complexes
- ▶ Ecology and Recreation
- ▶ Apply science and local knowledge



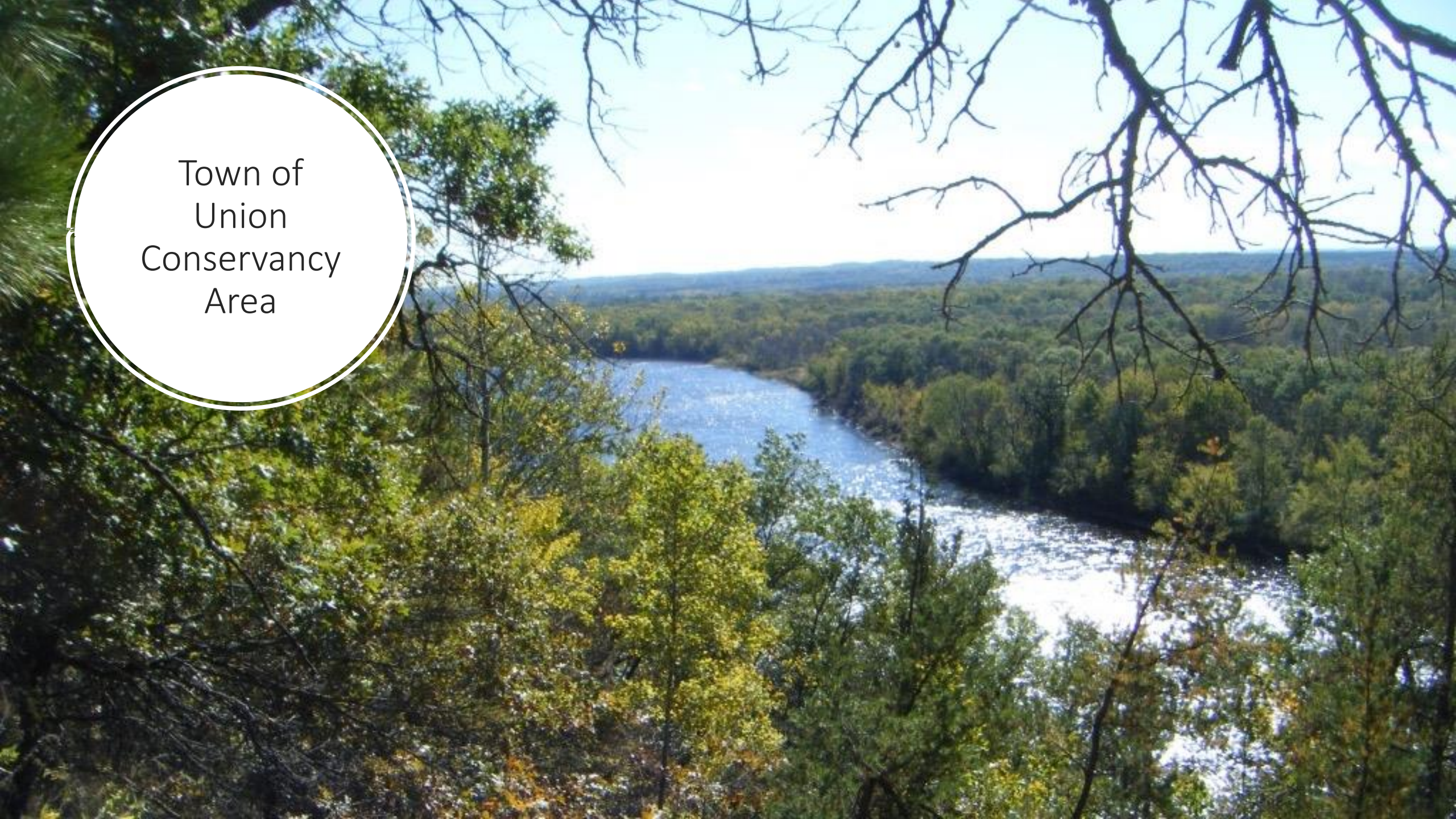
Partnerships & Community
Engagement taking our work to a
deeper level



- 
- Conservation easements
 - Land acquisitions
 - Land donations

A few project examples from 2018/19...





Town of
Union
Conservancy
Area

- Lower Chippewa River
- Perched sand dunes
- Hiking trails
- Cultural resources



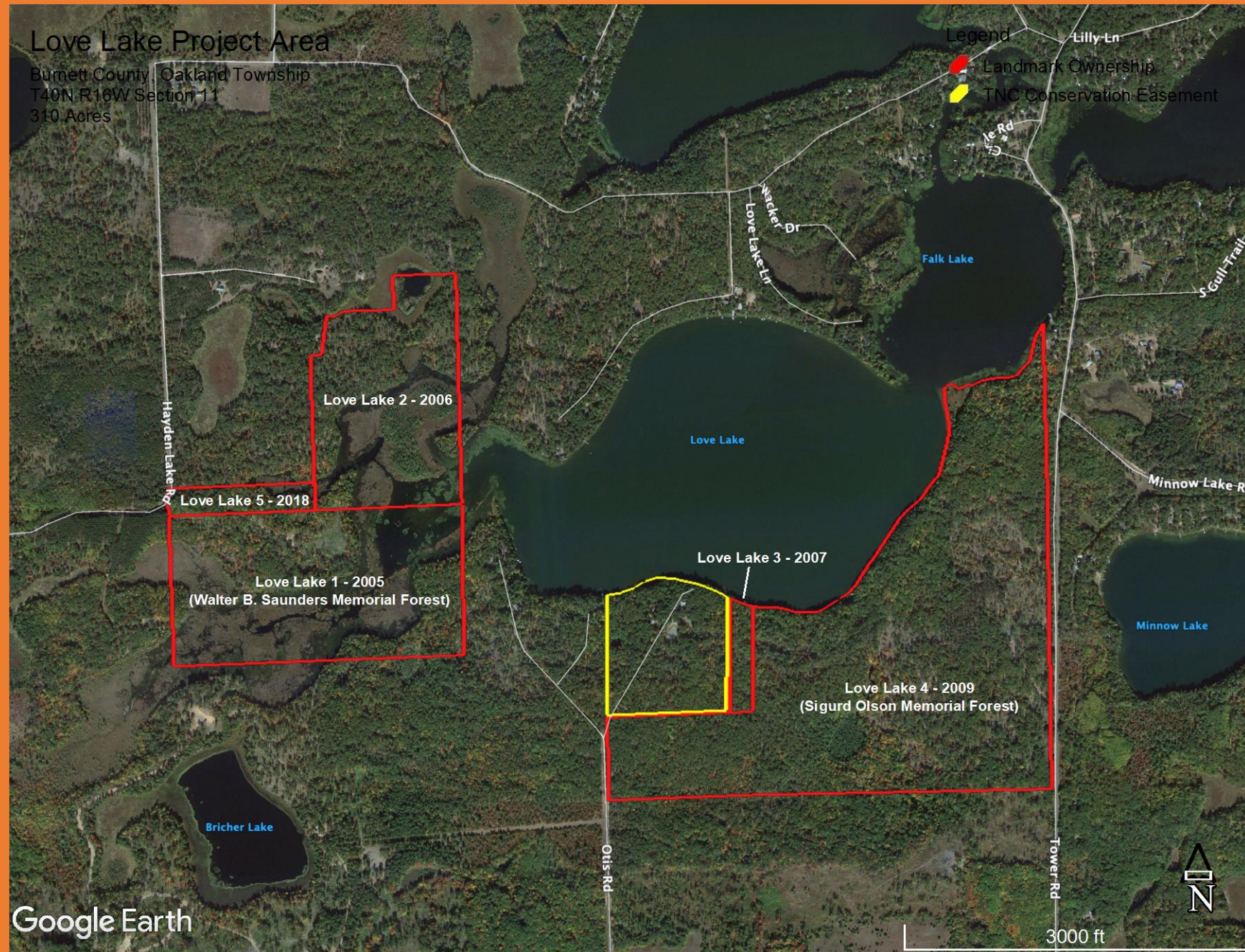


Swenson Forest Preserve – Siskiwit Falls

Managed in cooperation with Bayfield County Forestry and Parks




Love Lake Preserve – Tract 5





A collaborative project between Landmark, Love Lake Association, WI DNR, The Nature Conservancy and Northland College



Ten Mile
Creek II – St.
Croix Wetland
Management
District



Ten Mile Creek Grassland Restoration

Protecting Private Land

**Conservation Agreements with
Private Landowners**



What is a Conservation Easement?

A conservation easement is a permanent legal agreement by which landowners voluntarily place restrictions on the use of their property in order to protect the land's natural attributes.

Issues Addressed in Conservation Easements

- Residential development
- Subdivision
- Shoreland buffers
- Reserved rights
- Forestry
- Agriculture
- Ecologically sensitive areas
- Public access



Conservation Easement Benefits

In addition to permanent conservation*...

- Income Tax incentives
- Property stays in private ownership
- Flexible document to draft

Owner may address various rights

Tailored to fit each unique situation

**Primary benefit*

What a Conservation Easement is Not

A tool used to decrease property taxes;

An exclusion of management;

An allowance for public access/hunting;

An exhaustive list of peculiar restrictions;

Free... permanent land protection / stewardship and legal defense takes considerable resources.



Brule River –
Wells
Conservation
Easement



- Frontage on Brule River and unnamed tributary
- Public access riparian corridor for fishing



Parent-
Maytum
Conservation
Easement

Latitude: 46.799858
Longitude: -90.878677
Elevation: 226.76m



Pikes Creek
watershed

Connectivity
with public
land

Like so many
projects...
committed
landowners

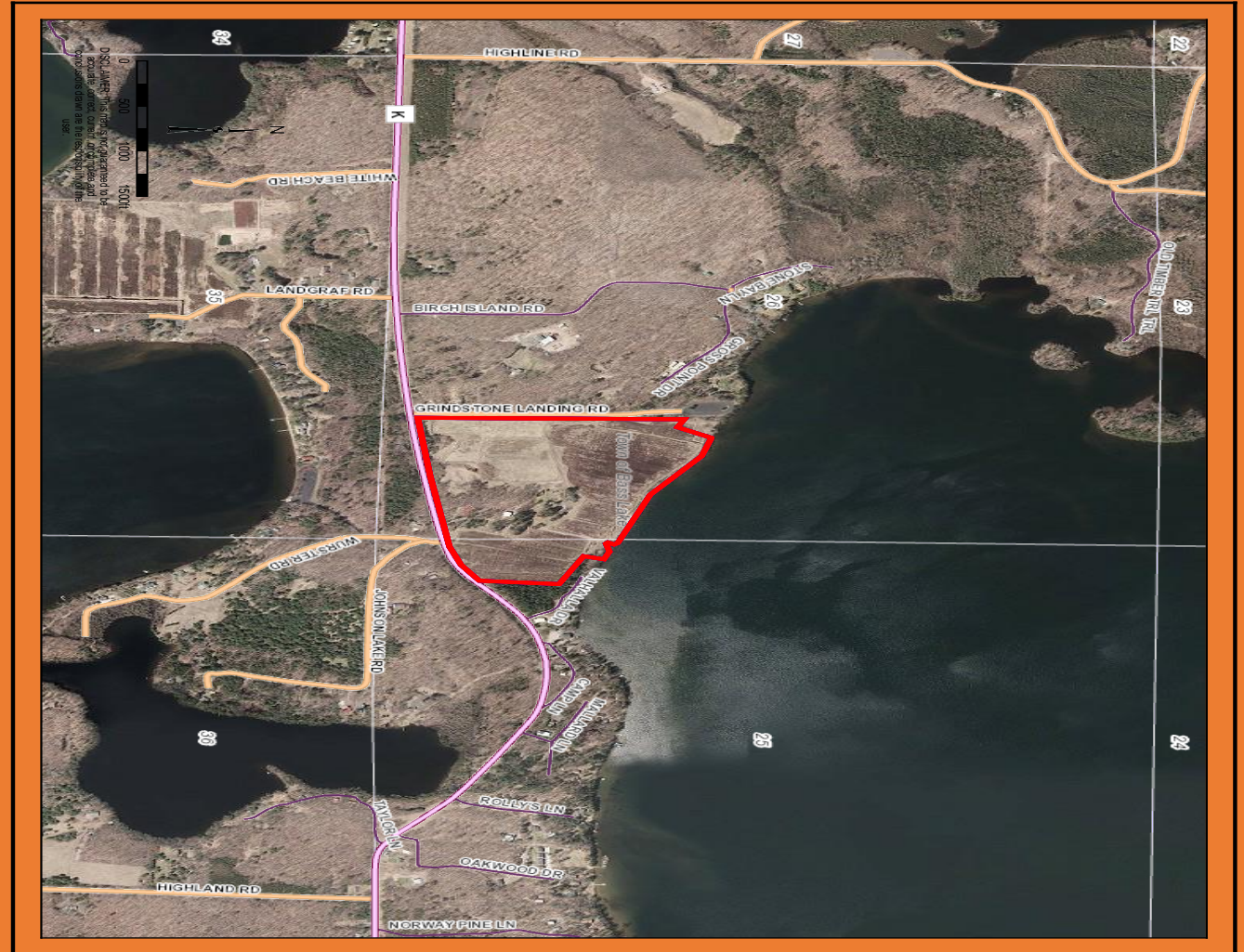
Every situation is different!

- Land
- Goals
 - Local, landowner, public
- Family / heirs
- Interest in land legacy
- Attachment to land
- Partners
- Income / wealth
- Decisions, decisions, decisions...



Grindstone Cranberry Bog

A Conservation Opportunity in your neighborhood



Site Description:

- Grindstone Lake Outstanding Resource Water
- 57 acres
- Popular fishery
- > ¼ mile frontage
- Couderay River watershed – WI Land Legacy Area of Interest
- Site of former active commercial cranberry operation





DISCLAIMER: This map is not guaranteed to be accurate, correct, current, or complete and is provided as a general reference only. It is not to be used for any other purpose.

Opportunity:

- Grindstone Lake Foundation
- Acquisition
- Protection
- Restoration
- Low-impact recreation
- Community partnership



Supporting the work of Landmark

- Get involved where you live!
- Land Conservation
- Estate Planning
- Volunteerism
- Membership gifts – individuals and business





LANDMARK
CONSERVANCY



Conserving Wisconsin's natural legacy
for everyone... forever.