

The logo for the Grindstone Lake Foundation is centered on the page. It consists of three lines of text. The first line is 'GRINDSTONE' in a bold, green, sans-serif font, with a black silhouette of a pine tree replacing the letter 'I'. The second line is 'LAKE' in the same green font, followed by three horizontal wavy lines representing water. The third line is 'FOUNDATION' in a bold, dark grey, sans-serif font.


GRINDSTONE
LAKE 
FOUNDATION

Grindstone Lake Association
Annual Meeting
July 10, 2021

Karen Mumford, GLF Board Member
Tony Westcot, Vice President, GLF

Status of Grindstone Lake Cranberry Bog: Past, Present, and Future Directions

Cranberry Bog

An aerial photograph showing a landscape with a large, dark blue lake in the upper half. Below the lake is a green, marshy area labeled 'Cranberry Bog'. To the right of the bog is a smaller, dark green lake labeled 'Grindstone Lake'. In the lower half of the image is another large, dark green lake labeled 'Lac Courte Oreilles'. The surrounding land is a mix of grey and brown, suggesting a forested or agricultural area. The text labels are in white, sans-serif font, and the 'Cranberry Bog' label has a white arrow pointing to the bog.

Grindstone Lake

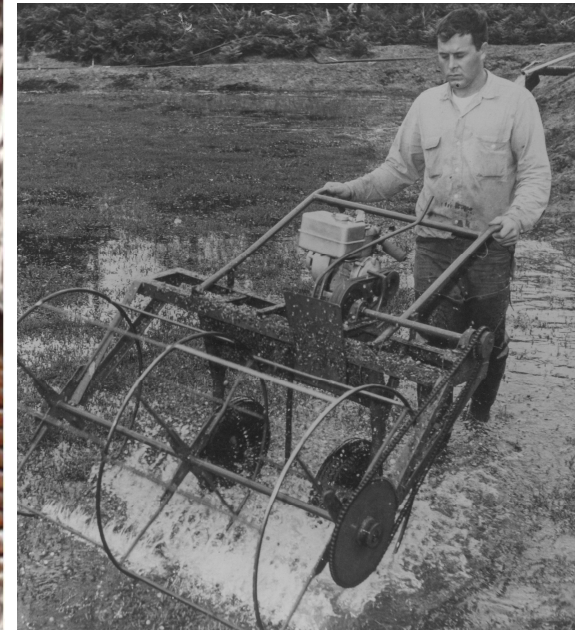
Lac Courte Oreilles



Grindstone Lake Cranberry Bog

- Located along southwestern shore of the lake
- 57 acres
- 1,537 linear ft (2.5%) of shoreline
- Bounded by
 - County Rd K
 - DNR Public Boat landing road
 - Private Property





The Past...



The Past...

- 1938 aerial photo

“Originally a non-forested wetlands”

Kelly Nechuta,
Sawyer Co. Zoning
and Conservation

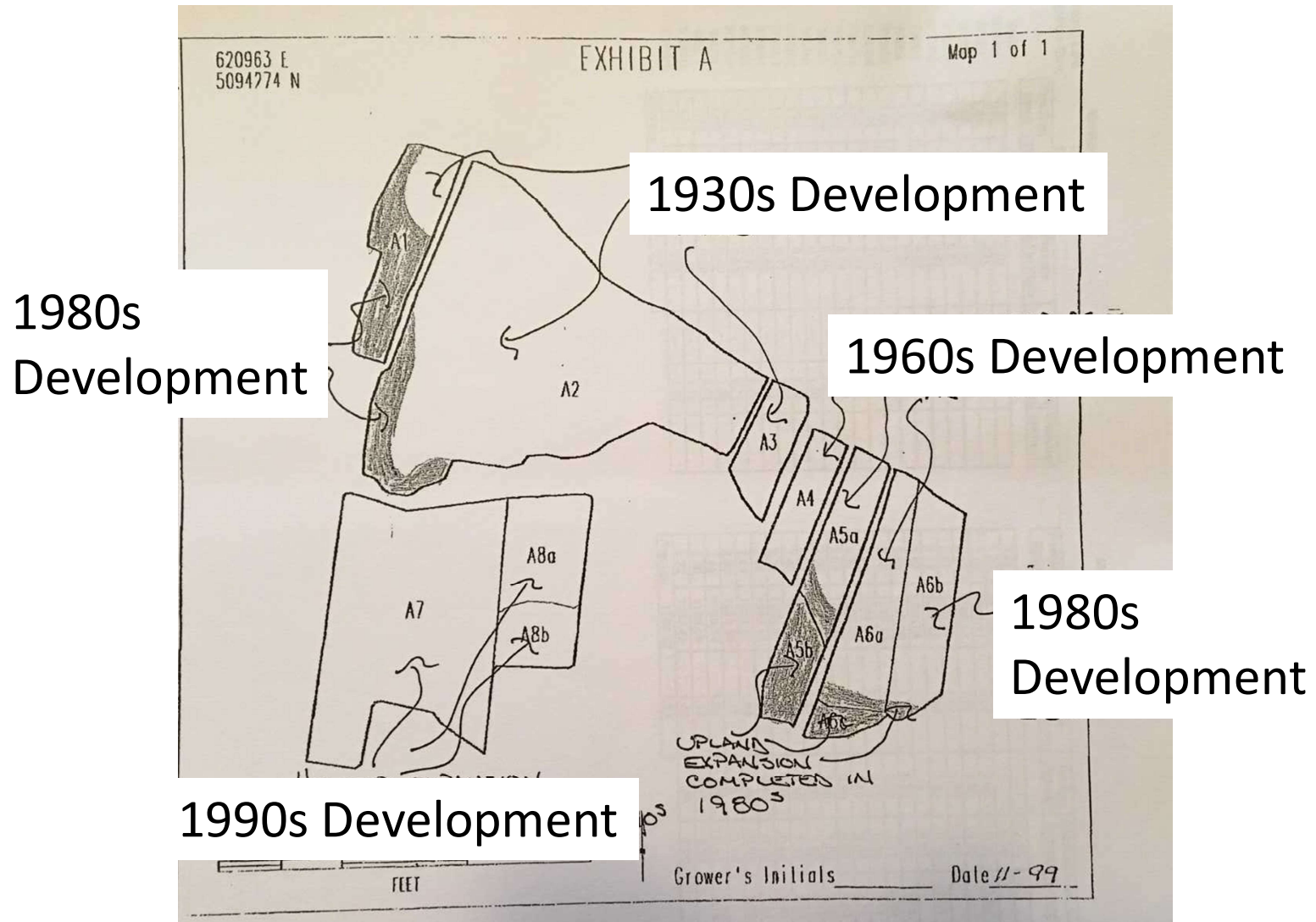
Cranberry Development: 1938-1990s



- 1938 conversion of wetlands to cranberry bogs
- Two inlets or irrigation ports along shoreline
- Irrigation ditches and culverts
- Bogs were expanded in 1960s, 1980s, and 1990s



Cranberry Development: 1938-1990s





Proposed Residential Development: 1990s-2000s

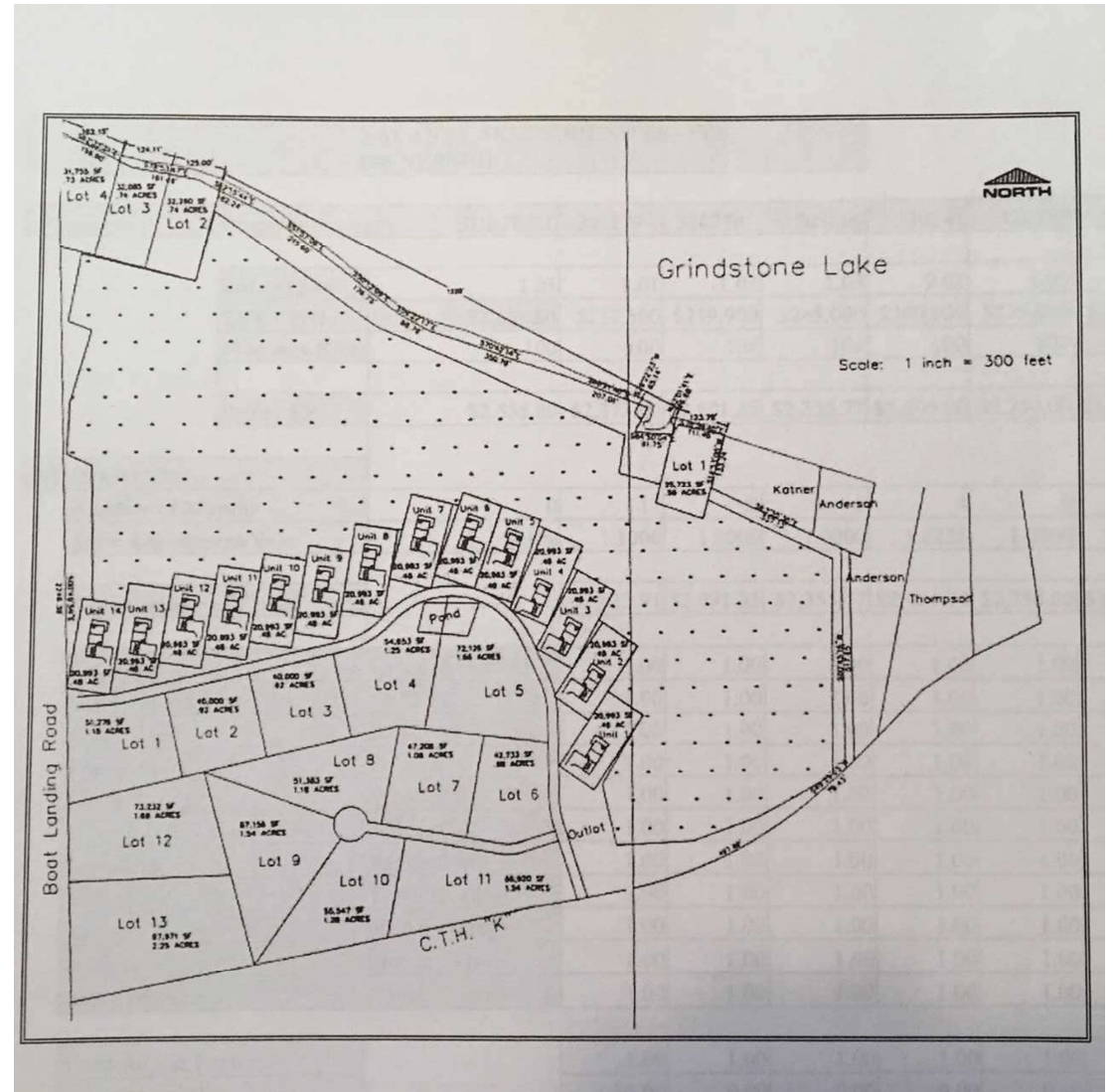


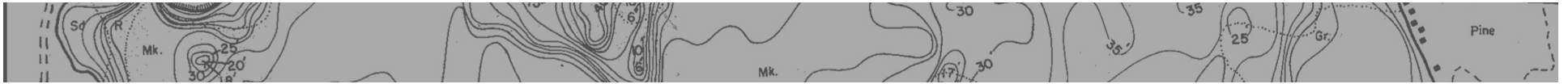
- Initial development
 - 64 residential units and dredging of wetlands for a marina
 - DNR did not approve
- Grindstone Lake Association became actively involved in the bog in 2007
 - Coordinated public hearings
 - Identified strategies to support the development and wetlands protection
 - Development proposal adjusted to 31 units with wetlands protection



31-unit development

PROPOSED RESIDENTIAL DEVELOPMENT



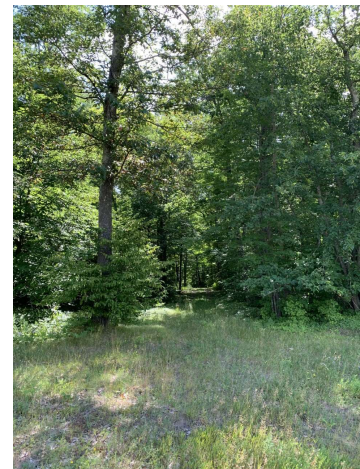


- Proposal failed - \$\$
- Continued as an active cranberry farm until early 2000s
- Additional development proposals followed



The
Present


GRINDSTONE
LAKE 
FOUNDATION

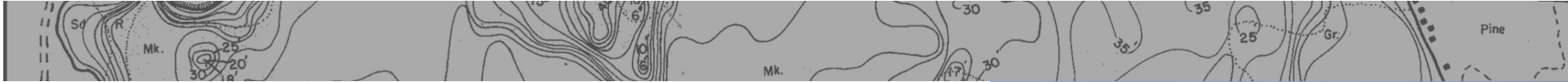




Grindstone Lake Foundation (GLF)



- Formed July 31, 2018
 - **Purpose:** Raise funds to purchase bog to protect water quality
 - Acquired 501(c)(3) status
 - Charitable organization affiliated with the Grindstone Lake Association
- 



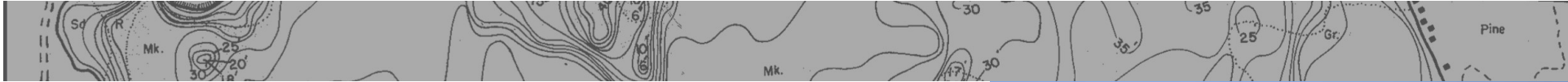
GLF and Bog Acquisition



September 17, 2018

- Cranberry bog up for sale
- Grindstone Lake property owner purchased bog







GLF and Bog Acquisition


- Purchase agreement assigned to the Foundation
- Foundation fundraising to pay off loan
- **Grindstone Lake Foundation, Inc. is the title holder to the property**





Our CLEAR
Vision for the
Grindstone
Lake
Cranberry Bog



- **Conservation:** Protect water quality and clarity; restore wetlands and native species
 - **Legacy:** Ensure enjoyment of clear water lake for fishing, swimming, and boating for generations to come
 - **Education:** Provide opportunities for the community to learn about the history of the land, cranberry farming, and native plants
 - **Add value:** Maintain water clarity for a positive impact on property values
 - **Recreation:** Construct trails for walking, running, skiing, snow shoeing, picnicking
- 



Fundraising and Acquisition Status

- **\$468,000 Raised to Date!**
 - Pledges and donations from Grindstone Lake homeowners, area businesses, and friends
 - Wisconsin DNR land acquisition grant

Thank you!!





COVID

- One-year extension on loan
- Payment due December 31, 2021





Fundraising and Acquisition Status



Exciting News!!

- June: received **\$200,000** matching grant
- **Current total \$668,000** → need to raise **\$200,000**





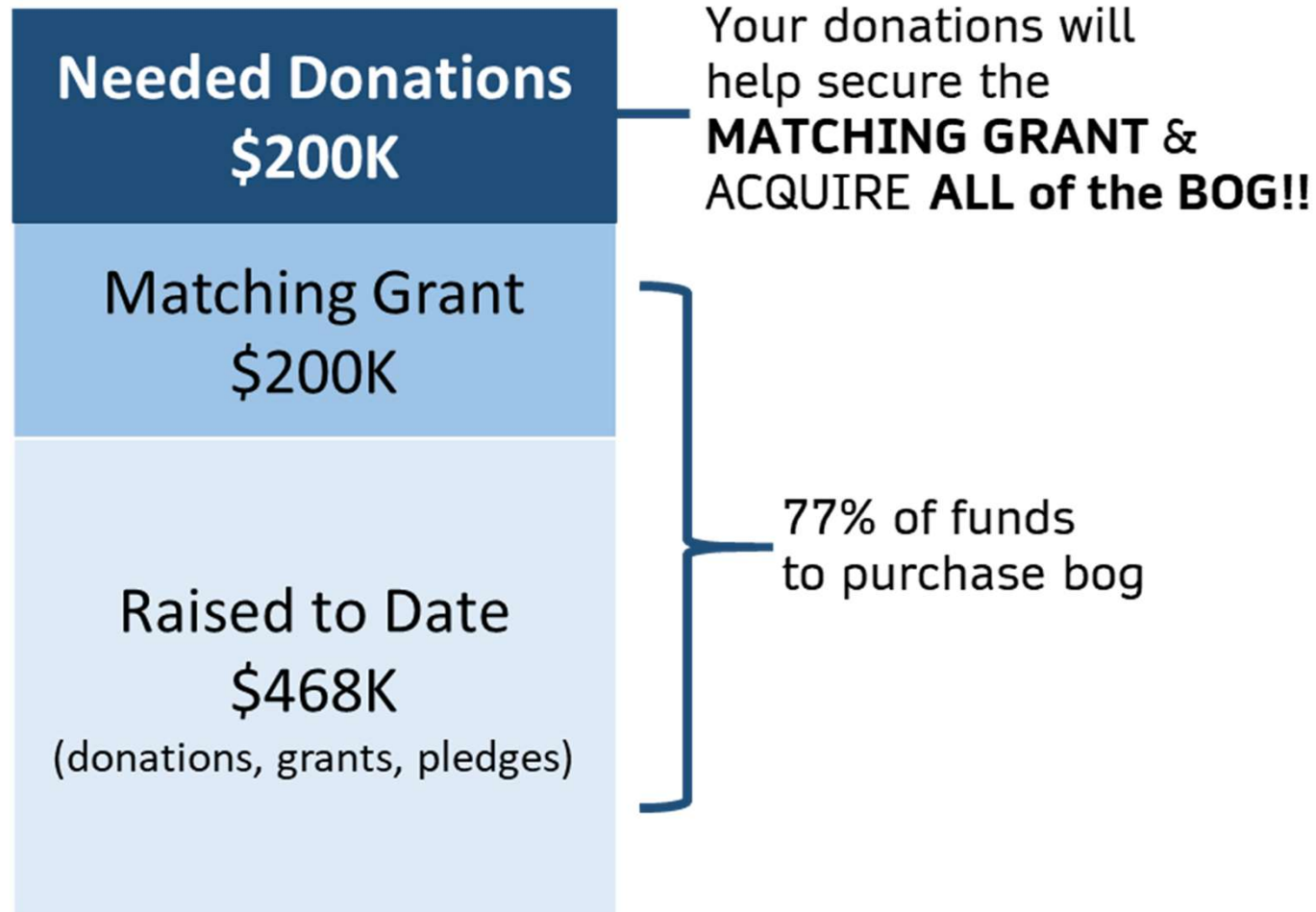
Outreach and Partnerships

- Sawyer County Board of Supervisors included Grindstone Bog in 2021 **Sawyer County Outdoor Recreation Plan**
- Bog planning and acquisition **presentations** at state and local conferences
- **Consultations for assistance and support**
 - WIDNR
 - Hayward School district
 - Landmark Conservancy
 - LCO Community College
 - U.S. Fish and Wildlife Service
 - Local businesses, and many more...!!!
- **Article in Sawyer County Record**



Ted Kohler, USFWS and Cheryl Contant, GLF board member observe native wolf grass at bog

Down to final push for acquisition:



- **Coordinating additional fundraising events and activities**

SAVE THE BOG

Fundraising Campaign

GOAL: \$868,000

THANK YOU FOR YOUR SUPPORT!!

DONATE NOW: SAVETHEBOG.ORG

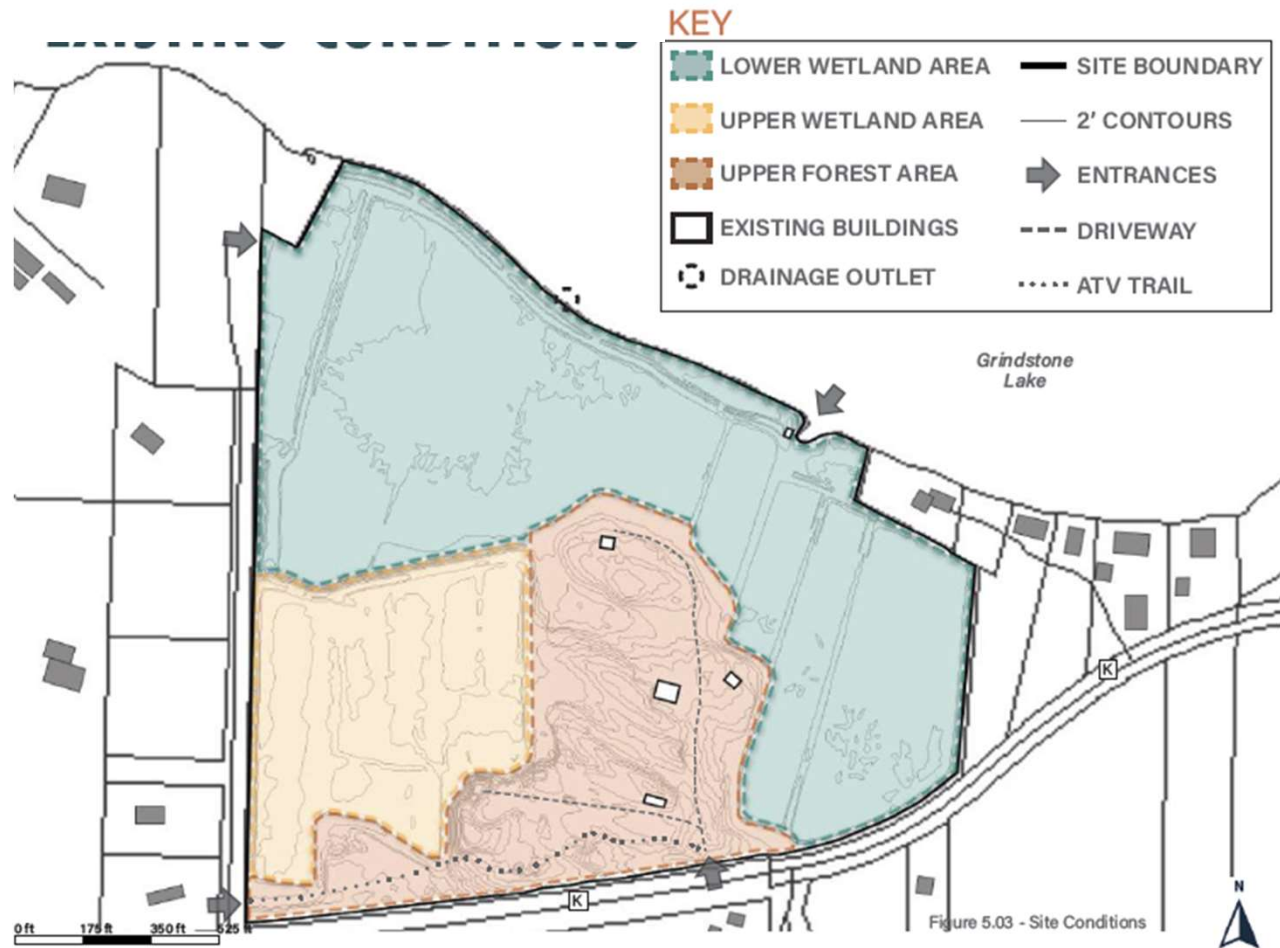


SAVE THE BOG.ORG

GRINDSTONE
LAKE
FOUNDATION

Banners along Co. Rd K

Future Directions



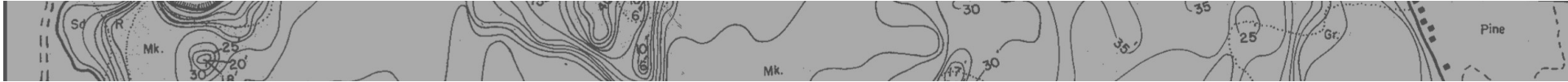
OUR PLAN:





Future Directions for the Land

1. Protect and Enhance Lake Water Quality
 - a. Reduce phosphorus loads
 - b. Reduce shoreland sediment loads
2. Habitat Preservation and Restoration
 - a. Lowland Wetlands (23 acres)
 - b. Upland Prairie (8-10 acres)
 - c. Forest Management



Future Directions for the Land



3. Enhance Recreation and Public Access

a. Non-motorized trails



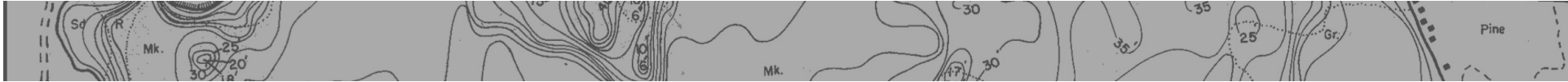


Future Directions for the Land



4. Educate Citizens, Students and Property Owners

- a. Signage
- b. Demonstration sites (shoreland and wetland restoration)



Future Directions for the Land

GRINDSTONE LAKE FOUNDATION

5. Continue to support partnerships

- a. LCO Tribal College and local K-12 schools
- b. Town of Bass Lake and Sawyer County
- c. Agencies and non-profits (DNR, USFWS, Landmark Conservancy, etc.)
- d. Businesses (resorts, recreational equipment, etc.)

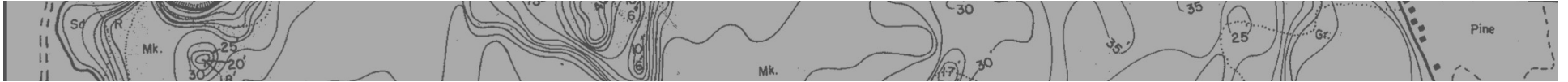


Bass Lake
Sawyer County, Wisconsin





In the years since the discontinuation of agricultural activities, the Bog has seen a return of wildlife and plant life. Monarch caterpillars, monarch butterflies, waterfowl and eagles are common sightings today. A large active eagle's nest sits atop a tree on the edge of the upper woodland area.



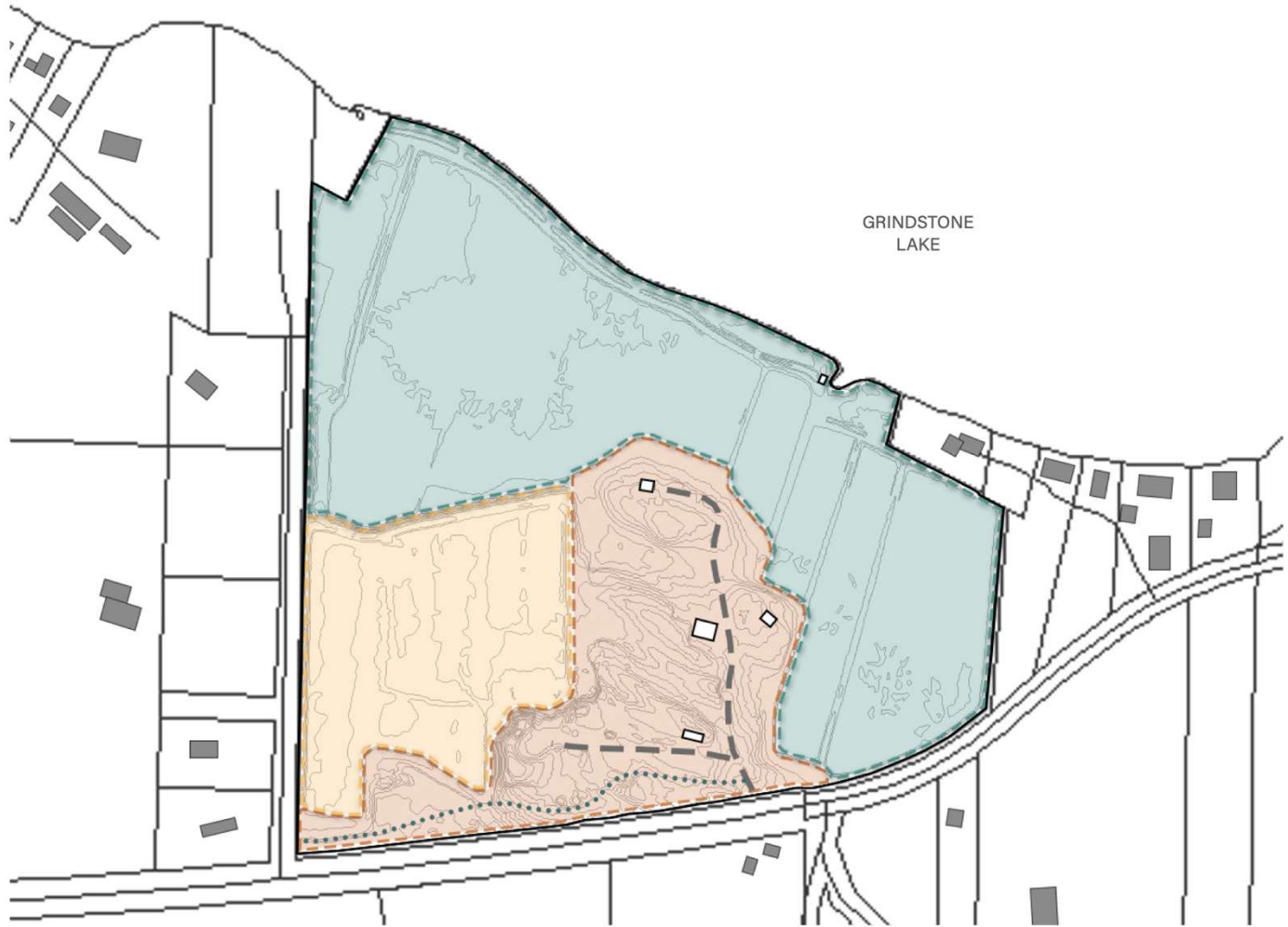
Preliminary Design

GRINDSTONE
LAKE 
FOUNDATION

1. UW-Madison Landscape Architecture Student, Billy Acheson
2. Spent one year analyzing land and developing plans
3. Consulted with the Project Steering Committee



EXISTING CONDITIONS



MAP KEY

-  UPPER WOODLAND AREA
-  UPPER BOG
-  LOWER BOG
-  EXISTING DRIVE
-  EXISTING ATV TRAIL
-  EXISTING BUILDINGS (GARAGES, PLUMBING, CABINS)



PROPOSED CONDITIONS



MAP KEY

- PROPOSED PATHS
- MAINTENANCE GARAGE
- WETLAND SCRAPES
- WETLAND BOG PRAIRIE
- DRY UPLAND PRAIRIE
- NORTHERN MESIC FOREST
- TAMARACK & SPRUCE WETLAND
- PARKING AREA
- ENTRY DRIVE
- SITE BORDER






1.71 MILES OF NEW TRAILS



EXISTING CONDITIONS



MAP KEY

-  UPPER WOODLAND AREA
-  UPPER BOG
-  LOWER BOG
-  EXISTING DRIVE
-  EXISTING ATV TRAIL
-  EXISTING BUILDINGS (GARAGES, PLUMBING, CABINS)



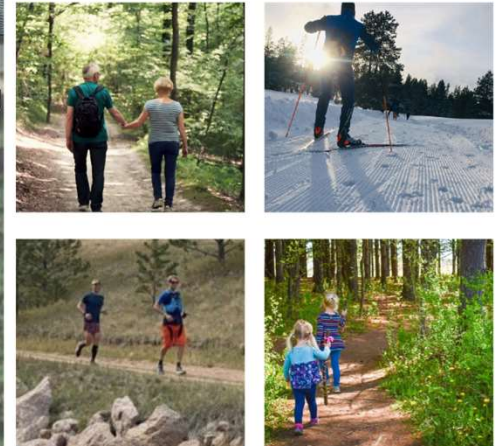
PROPOSED CONDITIONS



MAP KEY

- PROPOSED PATHS
- MAINTENANCE GARAGE
- WETLAND SCRAPES
- PARKING AREA
- ENTRY DRIVE
- SITE BORDER

USERS



1.71 MILES OF NEW TRAILS





BOARD OF DIRECTORS

Cynthia (Cindy) Parker – President

Tony Westcot, – Vice President

Michael (Mike) Warden - Treasurer

I. Reed Parker - Secretary

Donna Carlson

Cheryl Contant

Katie McCoid


Karen Mumford

Terre McJoynt



For more information on how to donate:

1. See the GLF Foundation insert in the GLA **newsletter** to mail checks or pledges to:




Grindstone Lake Foundation
PO Box 292
Hayward, WI 54843

OR//

2. Donate on our website at:
Savethebog.org
- 



I would like to contact someone about my donation:

- **Mike Warden, GLF Treasurer,**
mwarden3352@gmail.com (can assist with all forms of donations including stocks or securities)
 - **Cindy Parker, GLF President,**
cparker.grindstonelake@gmail.com
- 



THANK YOU!!

GRINDSTONE
LAKE
FOUNDATION